

KAT KOTONA
ASUMISEN
TURVALLISUUS
Safety at home

Centre for Economic Development,
Transport and the Environment



eksote

PSR
FIRE PROTECTION FUND

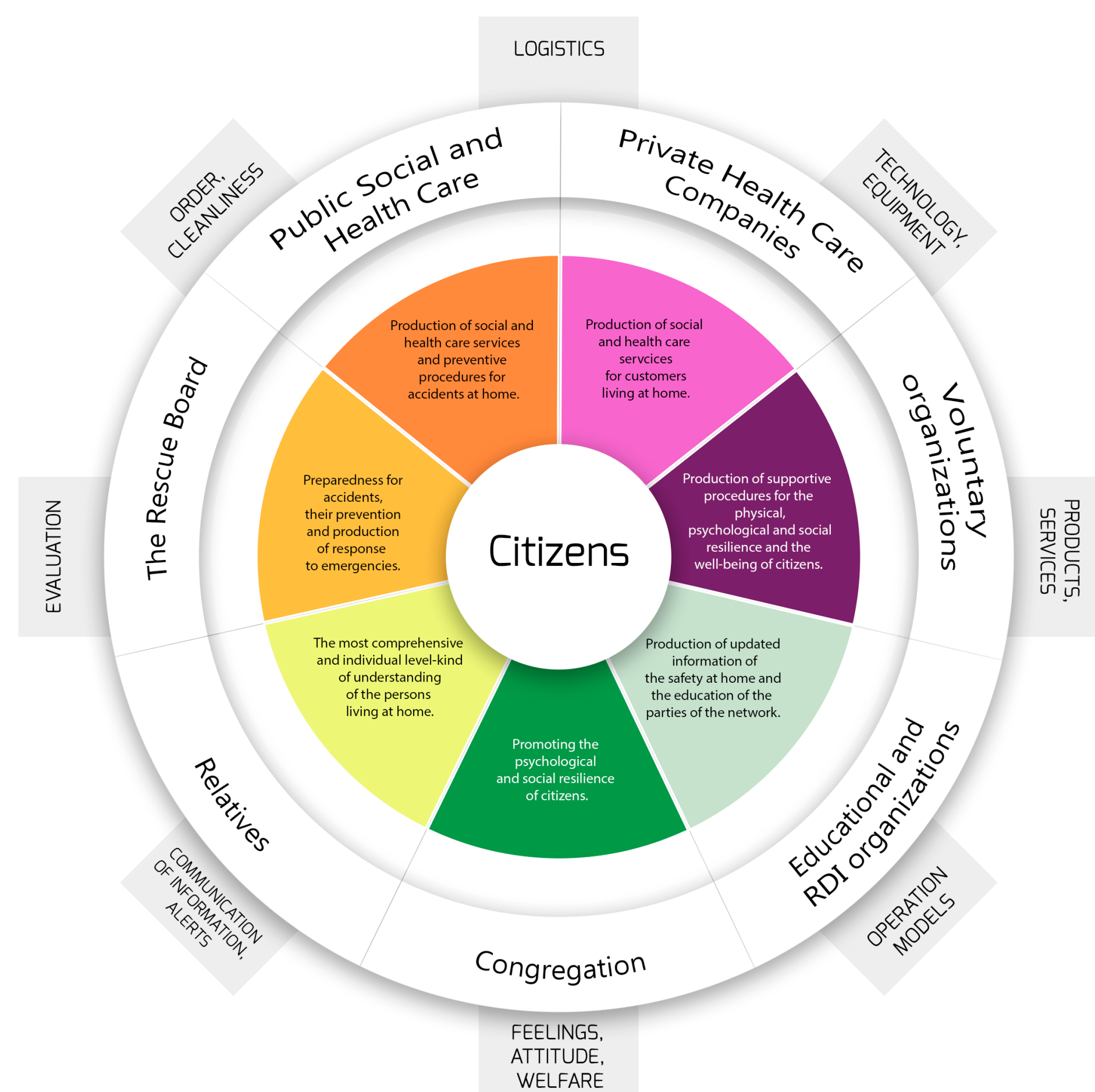
Participative care to keep elderly people safe in their homes in rural Finland

Safety at Home (KAT) is a participative approach to **planning better care services for elderly people** when they move from hospital to their homes in the rural region of South Karelia, Finland. It was launched in 2016 and is being carried out in various phases, supported by the EAFRD.

The first phase was dedicated to **mapping local needs and identify the key safety risks** faced by elderly people in their homes through a series of participative workshops and networking activities.

These involved the **elderly people themselves, family members, social and health care professionals and the fire brigade**.

This led to a **network model for improving housing safety** with a series of recommendations which combine both **social and digital solutions**.



For more information visit:

<http://www.kotonaasumisenturvallisuus.fi/>

Main results so far

- Improved risk profiling and understanding.** The networking model has enabled a collective identification of the key risks for elderly people living alone in remote rural areas. This importantly involves the old people themselves.
- Improved management tools** such as:
 - digital Safety at home – test for the systematic and comprehensive assessment of the housing risks** by both the citizens and professionals;
 - interactive Safety visit** - concept for the improved dialogue between elderly people and rescue board and social and health care professionals on care and safety issues.
- Open information flows through the network via a shared website.** This kind of joined-up action between many service providers and their users is precisely what is needed to solve many social problems in rural areas.